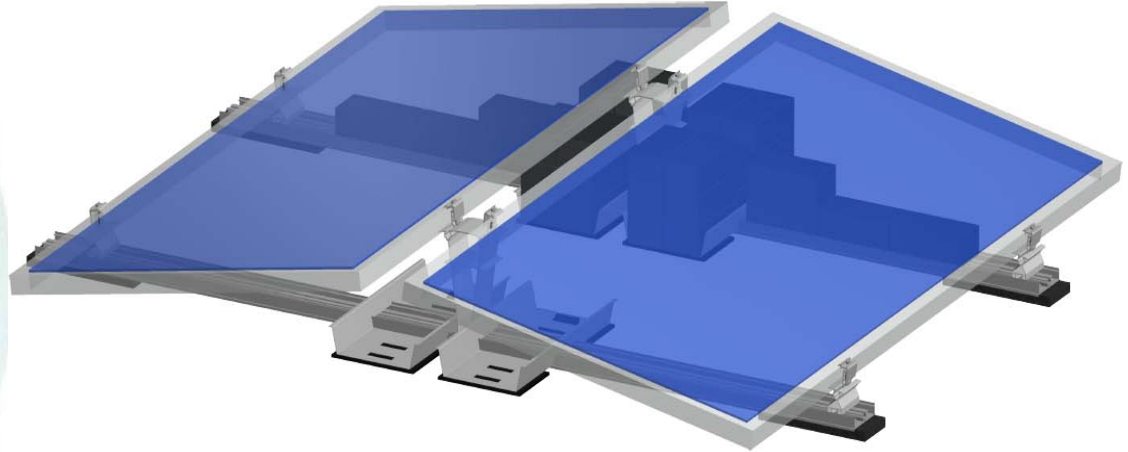


FIXGRID

PRODUCT SHEET

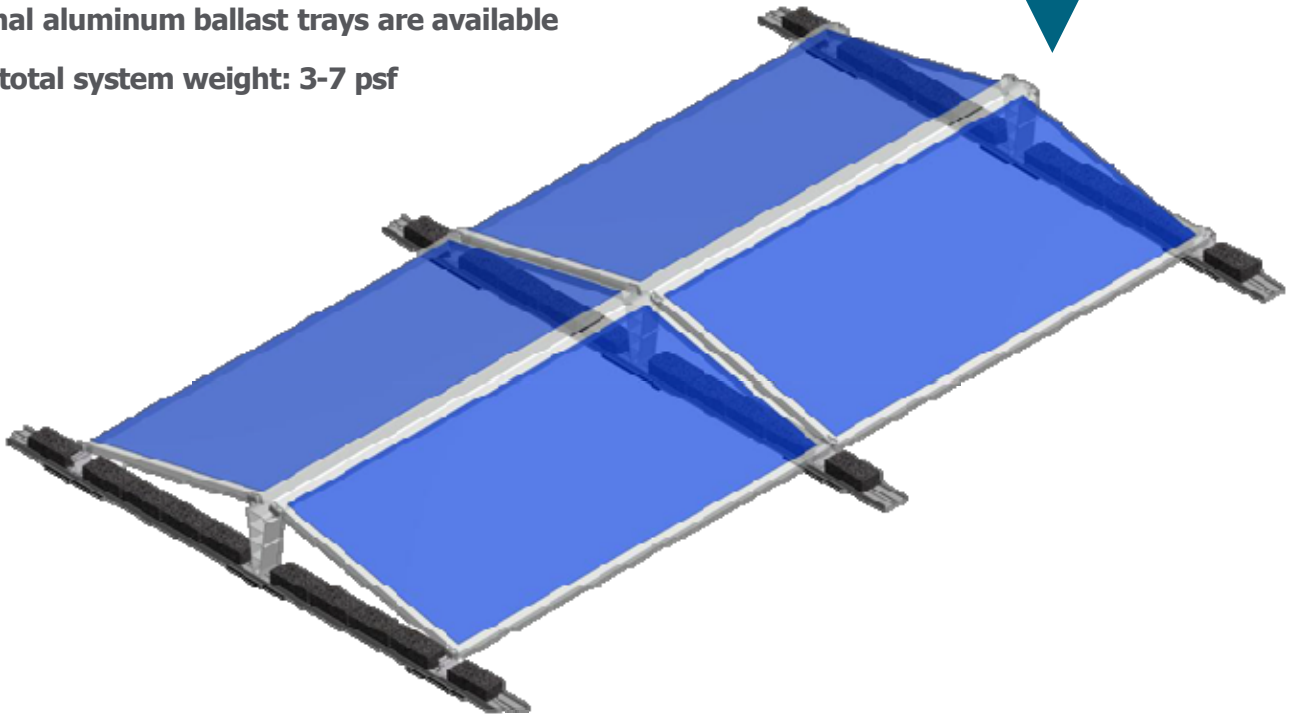


- **Rail-based flat roof system: fully ballasted, fully anchored or anything in between**
- **Roof pitch: up to 5° ballasted, up to 10° partially anchored**
- **Conforms to UL 2703 and ULC/ORD Std C1703 (Ed.1), certified to LTR AE-001**
- **Fire class resistance rating: Class A for Type I panels, in accordance with UL 1703**
- **Components: aluminum, aluminum sheet metal, stainless steel hardware**
- **Tilt: 5° and 10° in landscape orientation**
- **Clamping position: short side or long side**
- **Short and long ballast trays available (long tray suitable for gravel)**
- **Integrated roof protection mat with aluminum layer ensures compatibility with any roofing surface**
- **25 years limited manufacturer warranty**



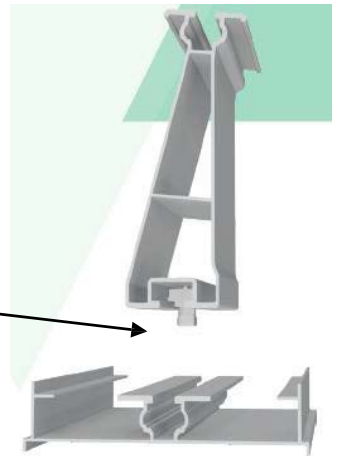
Ballast

- Ballast blocks are evenly distributed along the continuous aluminum base rail to avoid high point-loads
- Additional aluminum ballast trays are available
- Typical total system weight: 3-7 psf



Speed of Installation

- Very short installation times, only 1 tool required to fasten pre-assembled module clamps
- Pre-installed one-turn connector
- All module clamps are grounding
- Only one point of grounding required per array
- Array sizes up to 56 panels



For more information, visit

www.schletter-group.com

or send us an email to

rooftopNA@schletter-group.com